

Instructions for Use

Allpresan® diabetic Foam Cream INTENSIVE

Intended purpose

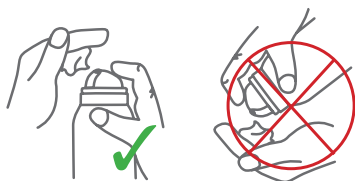
Allpresan® diabetic Foam Cream INTENSIVE is a medical device for the specific treatment of very dry to chapped foot skin in patients with diabetes mellitus. Its special properties also make it suitable for the treatment of wound edges. Allpresan® diabetic Foam Cream INTENSIVE promotes the healing process and supports recovery of the damaged skin barrier.

Properties

The specially designed active formula forms a breathable, two-dimensional protective coating. It strengthens the barrier function, protects against external impacts, and reduces mechanical stresses such as friction without impairing natural skin function. The skin is optimally supplied with moisture, and Pentavitin® also guards against moisture loss. Relieves itching, counteracts pressure marks, and also helps to prevent calluses.

Use

Mornings and evenings, apply an amount about the size of a hazelnut or walnut to the affected areas of the feet. Also beneficial for use between the toes. Allpresan® diabetic Foam Cream offers excellent convenience in use, since it is very easy to rub in. It can be applied very quickly without leaving behind an unpleasant greasy film. There is reduced risk of slipping, and you can put on your stockings – even compression stockings – immediately after use. Shake well before each use, and hold the container upright when applying (please ensure the can is in the upright position and do not tilt during use!)



Last update in:

08/2014

CE 0482

Manufacturer: **nsc** Pharma GmbH & Co. KG
Mergenthalerstr. 40 • 48268 Greven, GERMANY

Distributor:

neubourg pharma (UK) Limited • Headley House • Parklands
Queen Elizabeth Park • Railton RD • Guildford • Surrey, GU2 9JX • UK



Never apply to the eye region or mucus membranes, or in open wounds. Do not use Allpresan® diabetic Foam Cream INTENSIVE once the expiration date has passed. For external use only.

Contraindications



Do not use if there is known sensitivity to any of the ingredients. Do not use on infants or children under the age of 5 years.

Interactions



Urea can increase the release of other active ingredients from other external-use products, and promote their penetration into the skin. Please ask your doctor or pharmacist if you are using other external-use products.

Ingredients

Aqua, Urea, Butane, Decyl Oleate, Octyldodecanol, Cetearyl Alcohol, Propane, Stearic Acid, Propylene Glycol, Glycerin, Glyceryl Stearate, Panthenol, Saccharide Isomerate (Pentavitin®), Undecyl Alcohol, Allantoin, Potassium Lauroyl Wheat Amino Acids, Palm Glycerides, Capryloyl Glycine, Sodium Lauroyl Sarcosinate, Sodium Citrate, Citric Acid.

Pentavitin® made by Pentapharm Ltd.

Points to consider



Warning. Pressurised container: May burst if heated. Keep away from heat, hot surfaces, sparks, open flames and other ignition sources. No smoking. Do not spray on an open flame or other ignition source. 9 % by mass of the contents are flammable. Do not pierce or burn, even after use. Protect from sunlight. Do not expose to temperatures exceeding 50 °C/122°F. Keep out of reach of children. Use only in well-ventilated areas.

Legend:



Consult instructions for use



Batch code



Warning, please take note



Use by



Item number



25°C Maximum storage temperature

Product Information

The advantages of Allpresan® diabetic Foam Cream at a glance:

- Forms a breathable protective coating, with a specially designed active formula that strengthens and repairs the skin barrier
- Applies quickly, isn't greasy, rubs in effortlessly – Compression stockings can be put on immediately after application.
- Especially well tolerated – tested and recommended by the German Allergy and Asthma Association e.V. (DAAB)
- Available in BASIC and INTENSIVE formulas



Urea

- Increases the moisture content of the skin's keratinous layer, thus making skin softer and more supple
- Stabilizes the skin's barrier function
- Relieves itchiness

Pentavitin®

- A moisturizing substance made from natural sugars
- Acts as a "moisture magnet" to improve the skin's moisture-binding ability
- Protects against dehydration

Panthenol

- Has a soothing and conditioning action
- Moisturizes
- Promotes the regeneration of the skin barrier