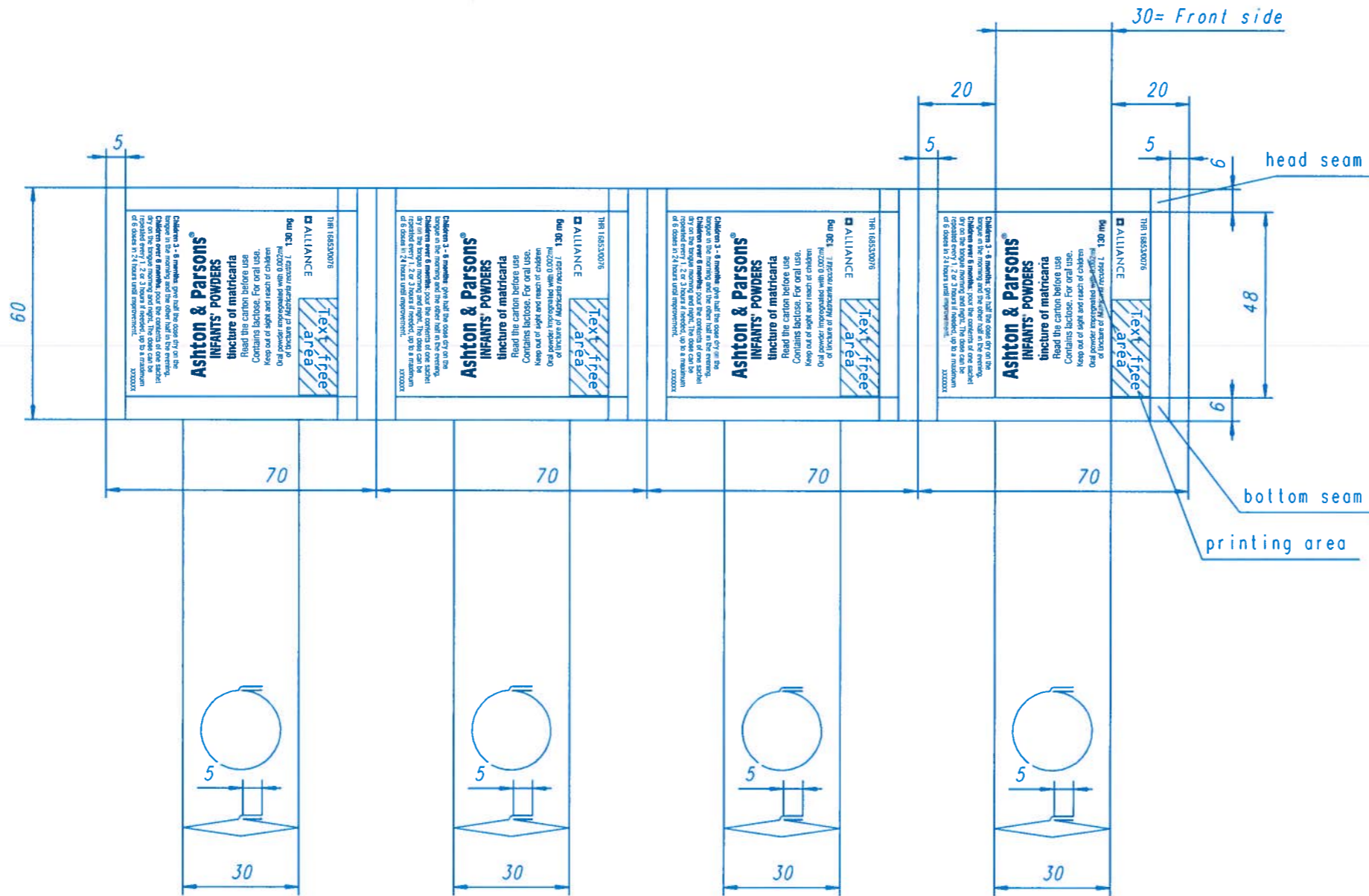


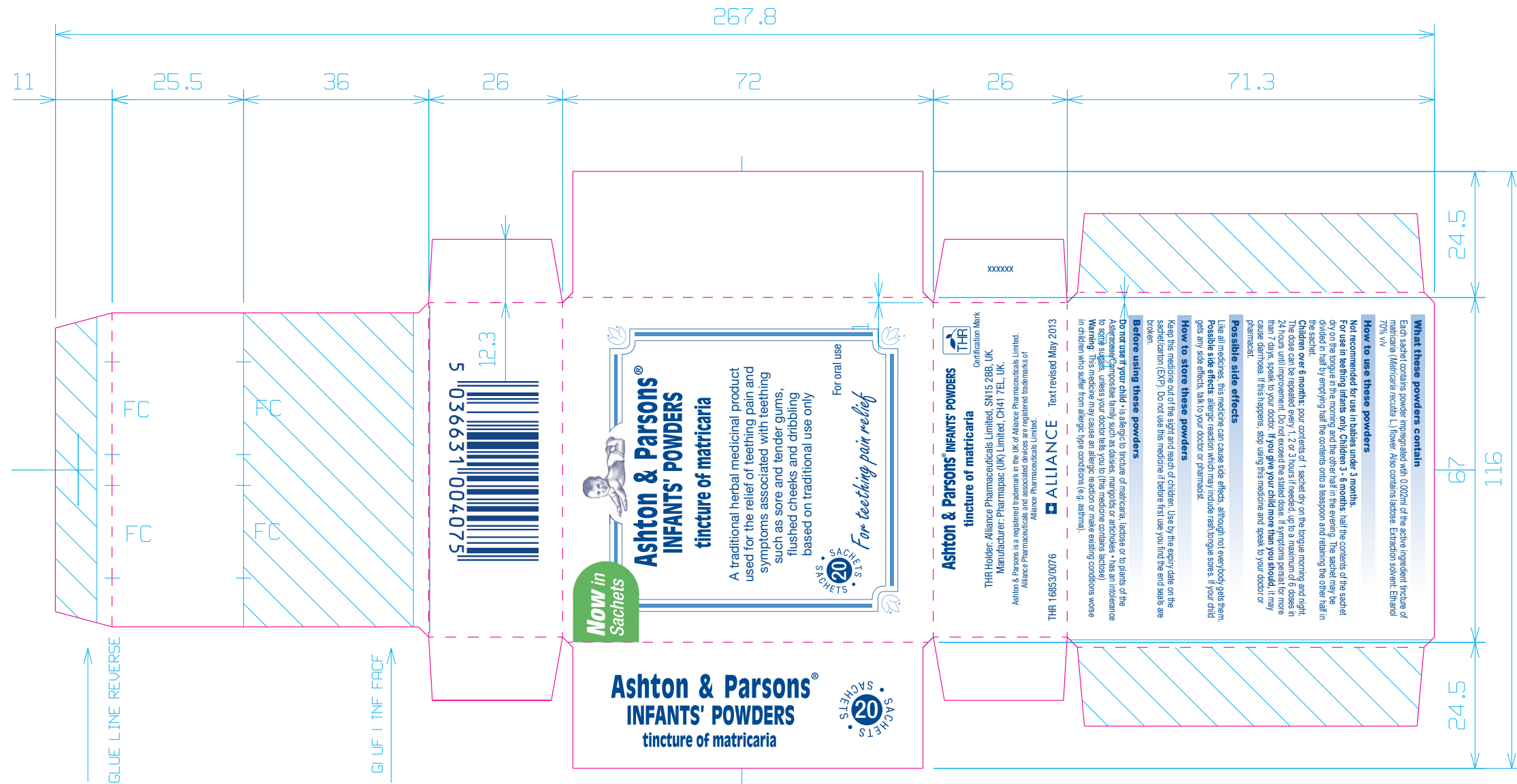
Artwork Information

Product Title:	Ashton and Parsons infant powders sachets		
Date:	15.08.2013	Product Size:	70mm x 60mm individual (60mm x 280mm)
Label Number:	12-250	Colours Used:	PMS 287C Blue
Fonts Used:	Neu Helv 55 Roman, 75 Bold		
Font size:	5.8pt		

Guides, Dimensions and Cutler guide are NOT to be printed.



Fin-Seal



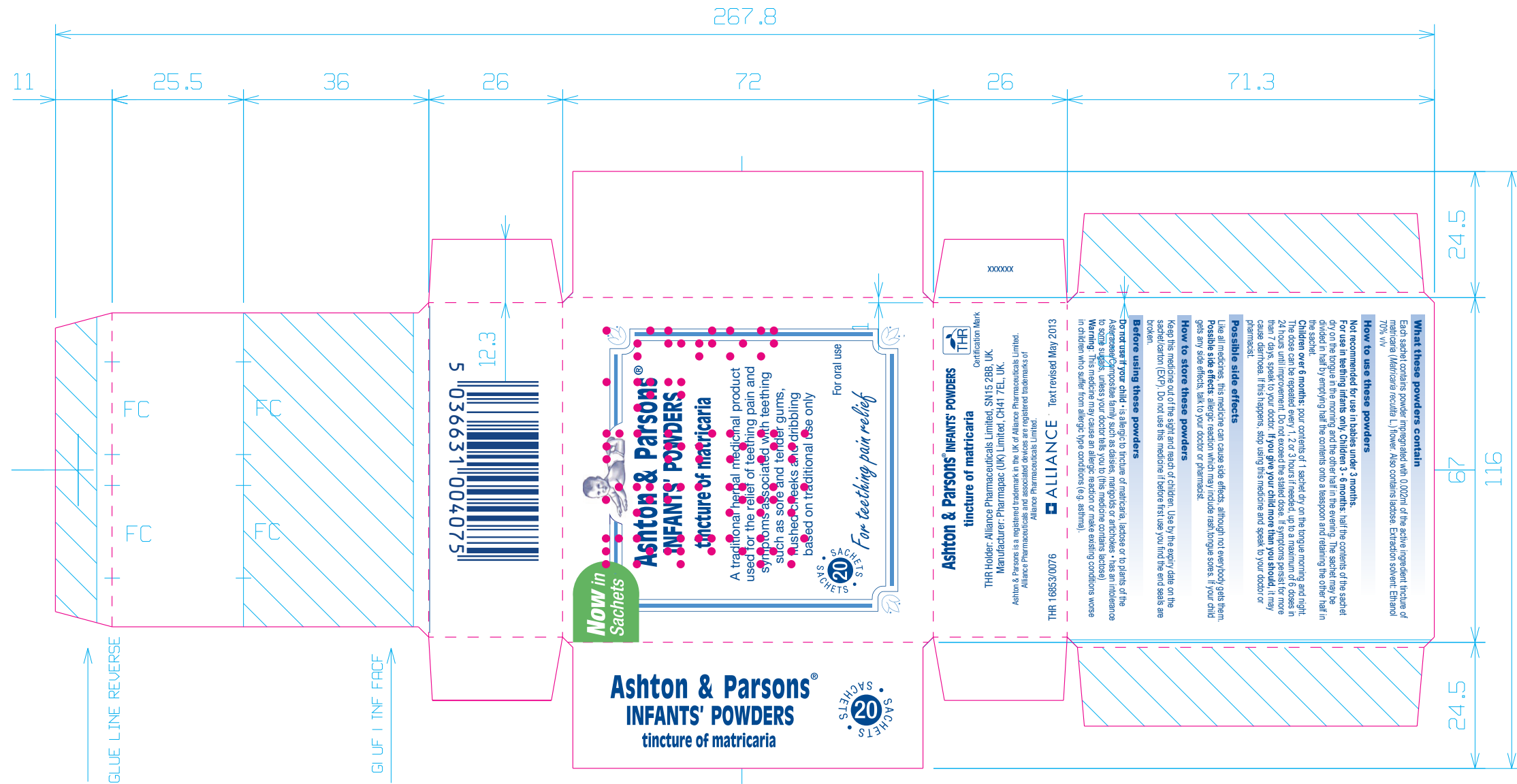
BRAILLE CONVERSION – English Alphabet
ASHTON AND PARSONS

BRAILLE CONVERSION – English Alphabet
INFANTS POWDERS

Artwork Information

Product Title:	Ashton+Parsons Infant Pdrs Carton		
Date:	02.09.13	Product Size:	72mm x 26mm x 65mm
Label Number:	12-250	Colours Used:	PMS 280C, PMS 279C, PMS 7489C
Fonts Used:	Arial		
Font size: (min-max)	5pt, 11pt		

Magenta text, keylines and shading are NOT to be printed



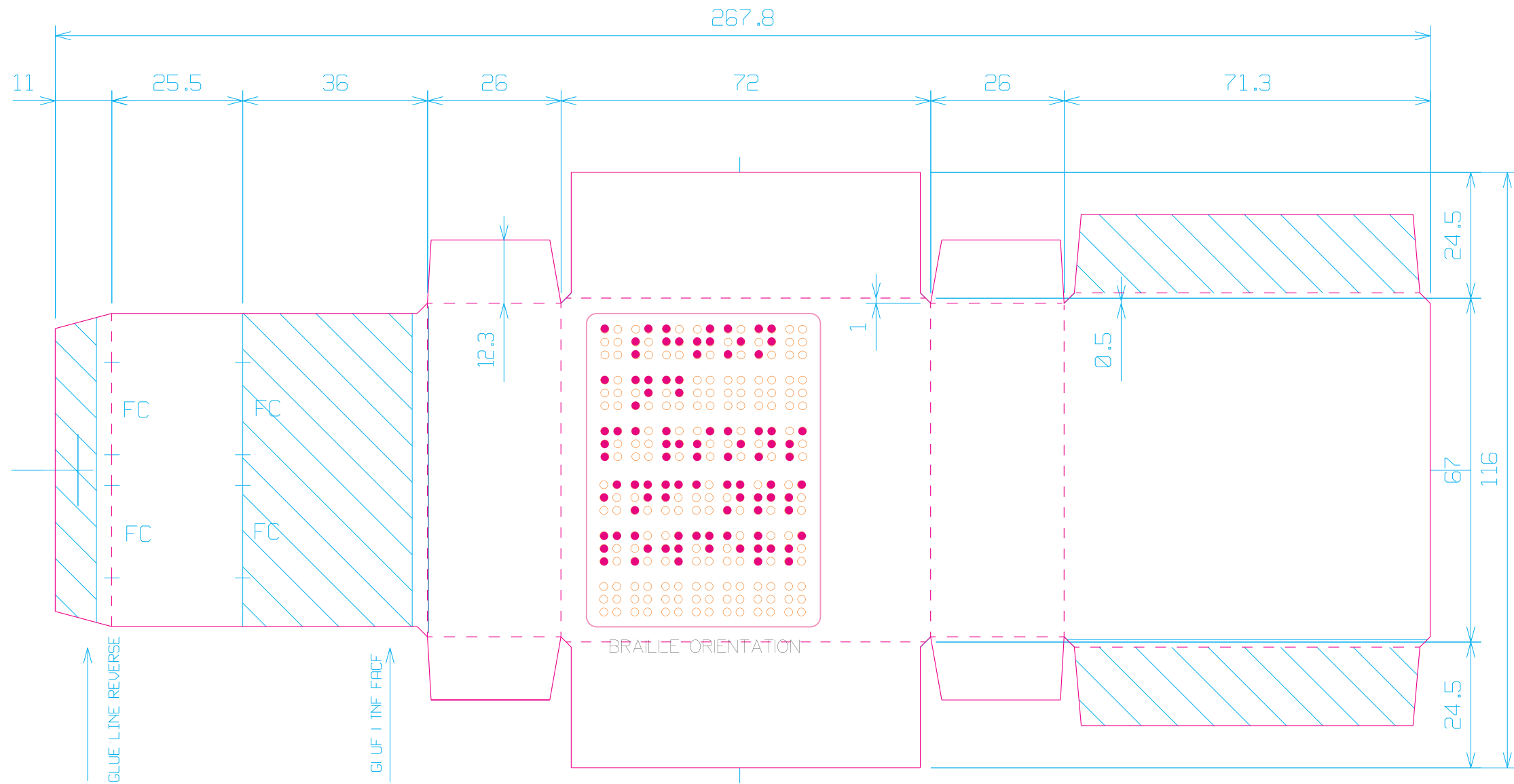
BRAILLE CONVERSION – English Alphabet
ASHTON AND PARSONS

BRAILLE CONVERSION – English Alphabet
INFANTS POWDERS

Artwork Information

Product Title:	Ashton+Parsons Infant Pdrs Carton		
Date:	02.09.13	Product Size:	72mm x 26mm x 65mm
Label Number:	12-250	Colours Used:	PMS 280C, PMS 279C, PMS 7489C
Fonts Used:	Arial		
Font size: (min-max)	5pt, 11pt		

Magenta text, keylines and shading are NOT to be printed



BRAILLE CONVERSION - English Alphabet

**ASHTON
AND
PARSONS**

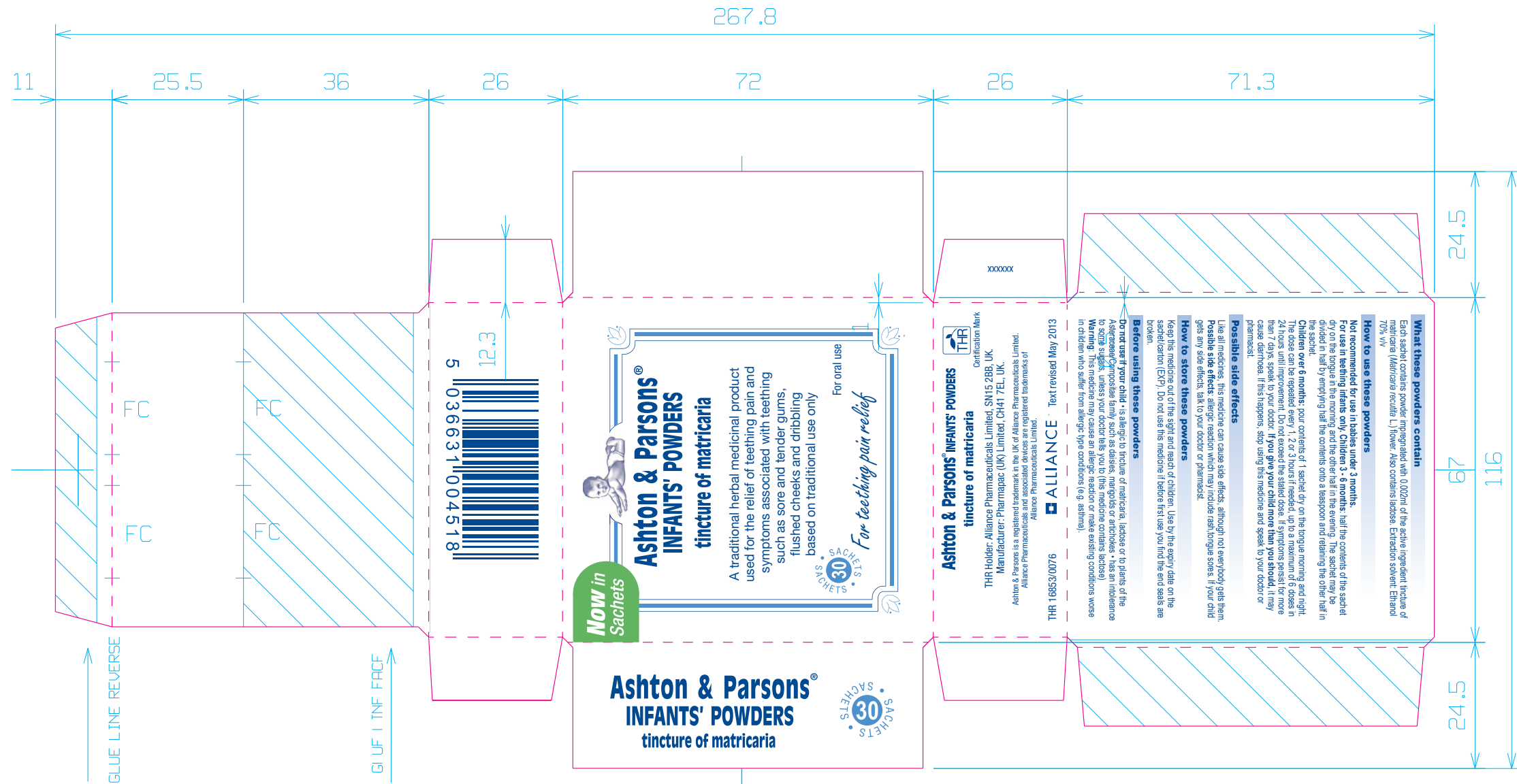
BRAILLE CONVERSION - English Alphabet

**INFANTS
POWDERS**

Artwork Information

Product Title:	Ashton+Parsons Infant Pdrs Carton		
Date:	02.09.13	Product Size:	72mm x 26mm x 65mm
Label Number:	12-250	Colours Used:	PMS 280C, PMS 279C, PMS 7489C
Fonts Used:	Arial		
Font size: (min-max)	5pt, 11pt		

Magenta text, keylines and shading are NOT to be printed



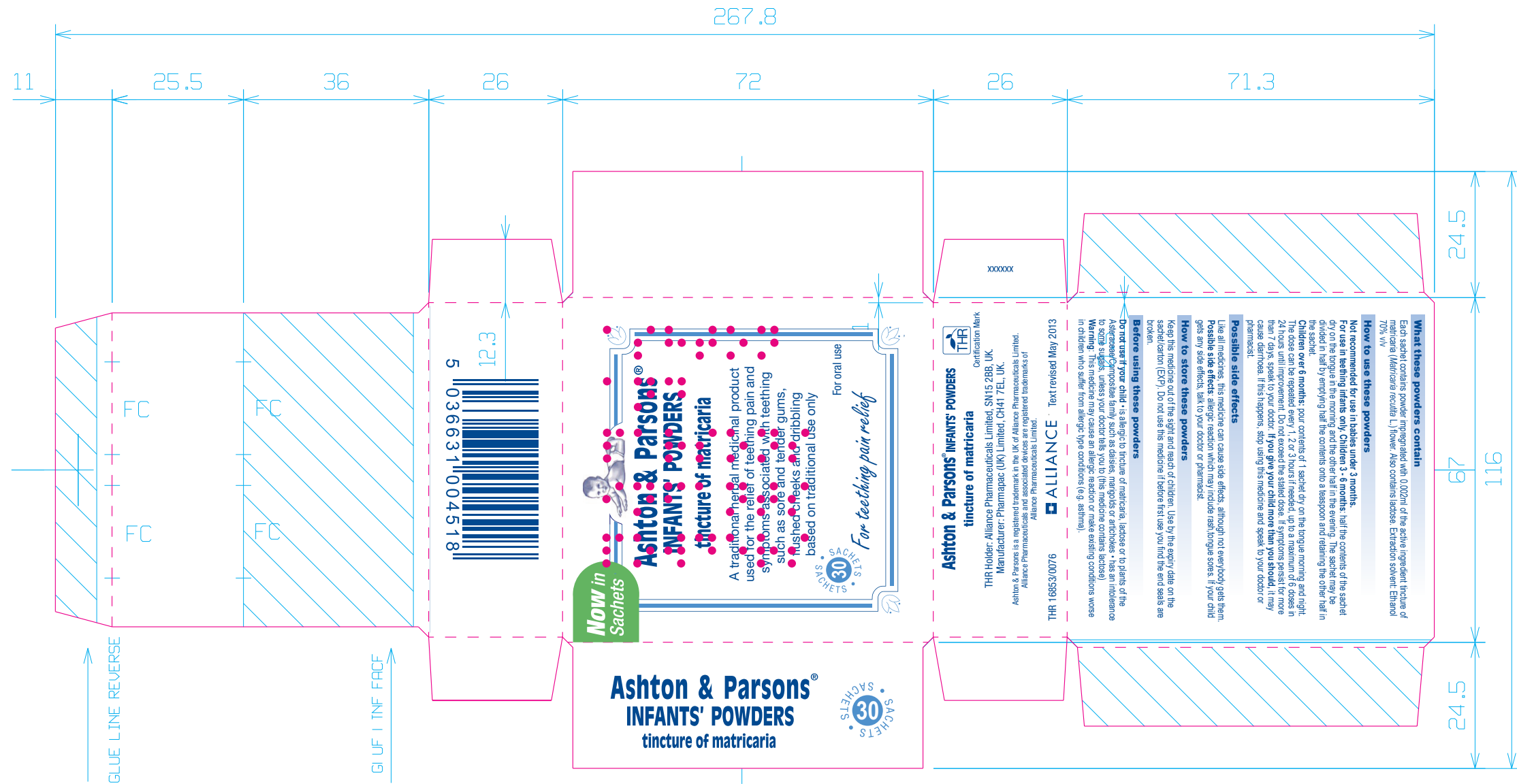
BRAILLE CONVERSION – English Alphabet
ASHTON AND PARSONS

BRAILLE CONVERSION – English Alphabet
INFANTS POWDERS

Artwork Information

Product Title:	Ashton+Parsons Infant Pdrs Carton (30 Pack)		
Date:	02.09.13	Product Size:	72mm x 26mm x 65mm
Label Number:	12-250	Colours Used:	PMS 280C, PMS 279C, PMS 7489C
Fonts Used:	Arial		
Font size: (min-max)	5pt, 11pt		

Magenta text, keylines and shading are NOT to be printed



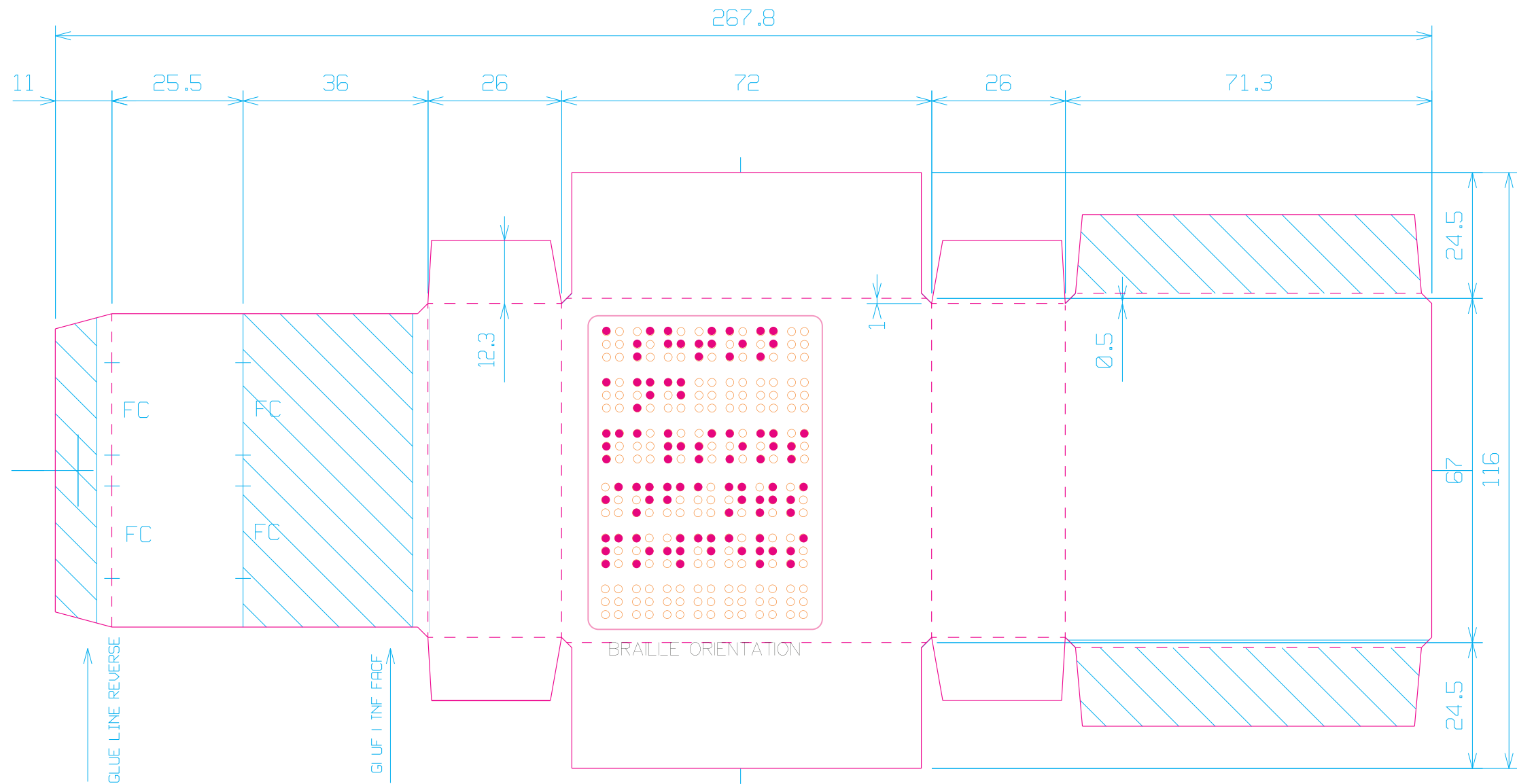
BRAILLE CONVERSION – English Alphabet
ASHTON AND PARSONS

BRAILLE CONVERSION – English Alphabet
INFANTS POWDERS

Artwork Information

Product Title:	Ashton+Parsons Infant Pdrs Carton (30 Pack)		
Date:	02.09.13	Product Size:	72mm x 26mm x 65mm
Label Number:	12-250	Colours Used:	PMS 280C, PMS 279C, PMS 7489C
Fonts Used:	Arial		
Font size: (min-max)	5pt, 11pt		

Magenta text, keylines and shading are NOT to be printed



BRAILLE CONVERSION – English Alphabet

**ASHTON
AND
PARSONS**

BRAILLE CONVERSION – English Alphabet

**INFANTS
POWDERS**

Artwork Information

Product Title:	Ashton+Parsons Infant Pdrs Carton (30 Pack)		
Date:	02.09.13	Product Size:	72mm x 26mm x 65mm
Label Number:	12-250	Colours Used:	PMS 280C, PMS 279C, PMS 7489C
Fonts Used:	Arial		
Font size: (min-max)	5pt, 11pt		

Magenta text, keylines and shading are NOT to be printed