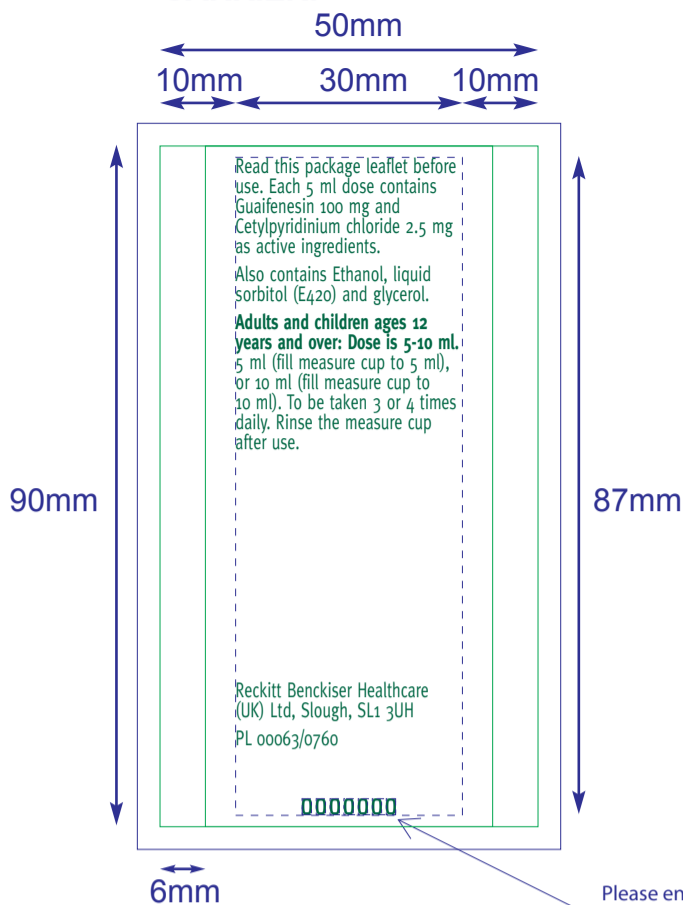


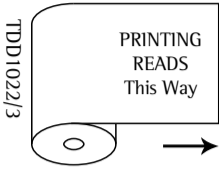
**CARRIER:**



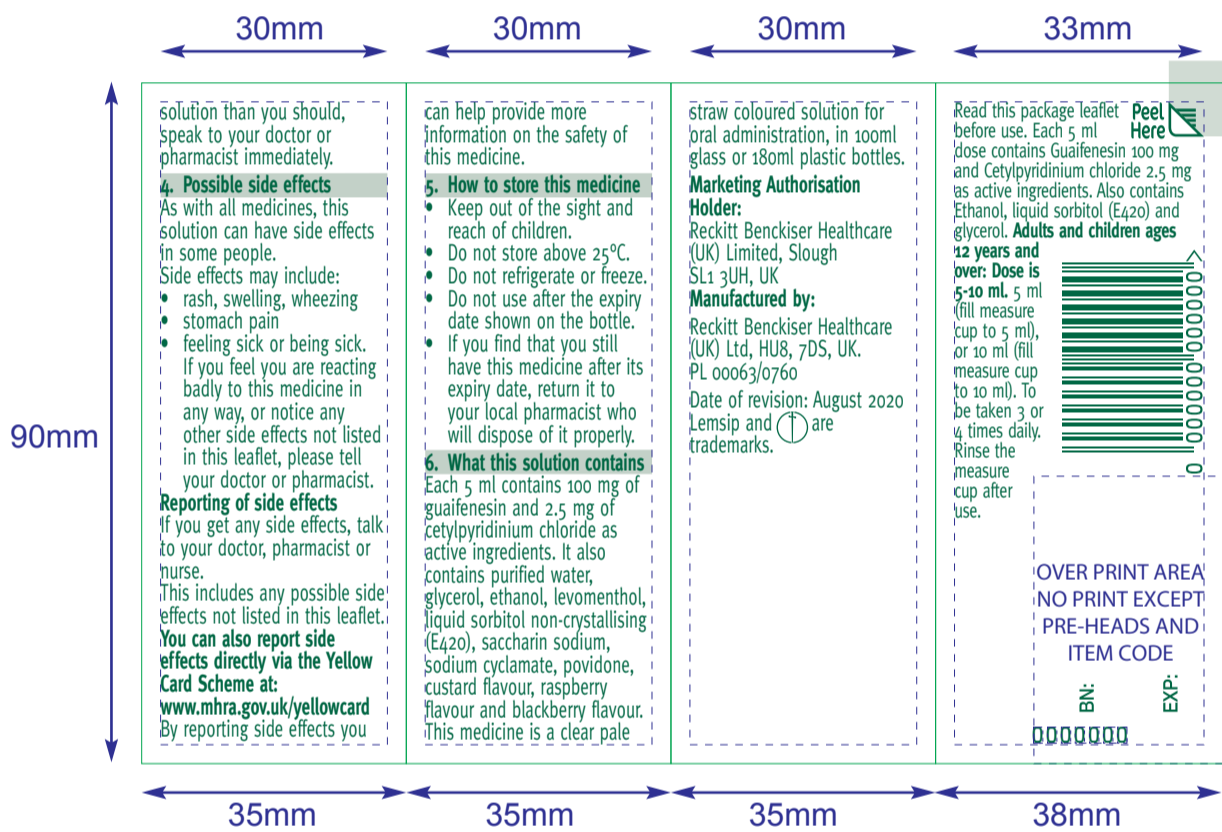
Read this package leaflet before use. Each 5 ml dose contains Guaifenesin 100 mg and Cetylpyridinium chloride 2.5 mg as active ingredients. Also contains Ethanol, liquid Sorbitol (E420) and glycerol. **Adults and children ages 12 years and over: Dose is 5-10 mL:** 5 ml (fill measure cup to 5 ml), or 10 ml (fill measure cup to 10 ml). To be taken 3 or 4 times daily. Rinse the measure cup after use.

Reckitt Benckiser Healthcare (UK) Ltd, Slough, SL1 3UH  
PL 00063/0760

0000000



**LEAFLET FACE:**



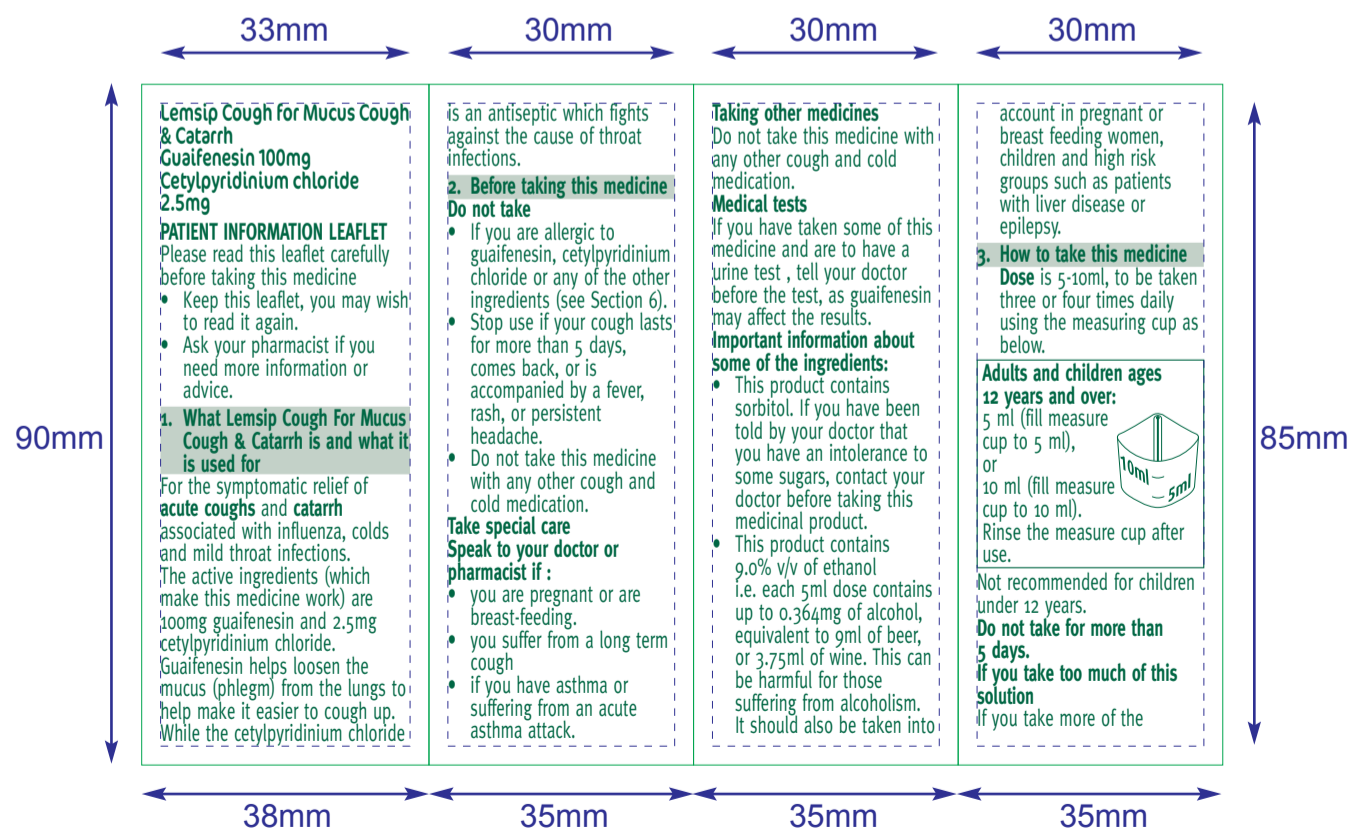
solution than you should, speak to your doctor or pharmacist immediately.  
**4. Possible side effects**  
As with all medicines, this solution can have side effects in some people. Side effects may include:  
• rash, swelling, wheezing  
• stomach pain  
• feeling sick or being sick.  
If you feel you are reacting badly to this medicine in any way, or notice any other side effects not listed in this leaflet, please tell your doctor or pharmacist.  
**Reporting of side effects**  
If you get any side effects, talk to your doctor, pharmacist or nurse. This includes any possible side effects not listed in this leaflet. **You can also report side effects directly via the Yellow Card Scheme at: [www.mhra.gov.uk/yellowcard](http://www.mhra.gov.uk/yellowcard)** By reporting side effects you

can help provide more information on the safety of this medicine.  
**5. How to store this medicine**  
• Keep out of the sight and reach of children.  
• Do not store above 25°C.  
• Do not refrigerate or freeze.  
• Do not use after the expiry date shown on the bottle.  
• If you find that you still have this medicine after its expiry date, return it to your local pharmacist who will dispose of it properly.  
**6. What this solution contains**  
Each 5 ml contains 100 mg of guaifenesin and 2.5 mg of cetylpyridinium chloride as active ingredients. It also contains purified water, glycerol, ethanol, levomenthol, liquid sorbitol non-crystallising (E420), saccharin sodium, sodium cyclamate, povidone, custard flavour, raspberry flavour and blackberry flavour. This medicine is a clear pale

straw coloured solution for oral administration, in 100ml glass or 180ml plastic bottles.  
**Marketing Authorisation Holder:**  
Reckitt Benckiser Healthcare (UK) Limited, Slough, SL1 3UH, UK  
**Manufactured by:**  
Reckitt Benckiser Healthcare (UK) Ltd, HU8, 7DS, UK. PL 00063/0760  
Date of revision: August 2020  
Lemsip and are trademarks.

Read this package leaflet before use. Each 5 ml dose contains Guaifenesin 100 mg and Cetylpyridinium chloride 2.5 mg as active ingredients. Also contains Ethanol, liquid sorbitol (E420) and glycerol. **Adults and children ages 12 years and over: Dose is 5-10 mL:** 5 ml (fill measure cup to 5 ml), or 10 ml (fill measure cup to 10 ml). To be taken 3 or 4 times daily. Rinse the measure cup after use.  
**Peel Here**  
  
OVER PRINT AREA  
NO PRINT EXCEPT  
PRE-HEADS AND  
ITEM CODE  
BN: EXP:  
0000000

**LEAFLET REVERSE:**



**Lemsip Cough for Mucus Cough & Catarrh**  
**Guaifenesin 100mg**  
**Cetylpyridinium chloride 2.5mg**  
**PATIENT INFORMATION LEAFLET**  
Please read this leaflet carefully before taking this medicine  
• Keep this leaflet, you may wish to read it again.  
• Ask your pharmacist if you need more information or advice.  
**1. What Lemsip Cough For Mucus Cough & Catarrh is and what it is used for**  
For the symptomatic relief of acute coughs and catarrh associated with influenza, colds and mild throat infections. The active ingredients (which make this medicine work) are 100mg guaifenesin and 2.5mg cetylpyridinium chloride. Guaifenesin helps loosen the mucus (phlegm) from the lungs to help make it easier to cough up. While the cetylpyridinium chloride

is an antiseptic which fights against the cause of throat infections.  
**2. Before taking this medicine**  
**Do not take**  
• If you are allergic to guaifenesin, cetylpyridinium chloride or any of the other ingredients (see Section 6).  
• Stop use if your cough lasts for more than 5 days, comes back, or is accompanied by a fever, rash, or persistent headache.  
• Do not take this medicine with any other cough and cold medication.  
**Take special care**  
**Speak to your doctor or pharmacist if:**  
• you are pregnant or are breast-feeding.  
• you suffer from a long term cough  
• if you have asthma or suffering from an acute asthma attack.

**Taking other medicines**  
Do not take this medicine with any other cough and cold medication.  
**Medical tests**  
If you have taken some of this medicine and are to have a urine test, tell your doctor before the test, as guaifenesin may affect the results.  
**Important information about some of the ingredients:**  
• This product contains sorbitol. If you have been told by your doctor that you have an intolerance to some sugars, contact your doctor before taking this medicinal product.  
• This product contains 9.0% v/v of ethanol i.e. each 5ml dose contains up to 0.364mg of alcohol, equivalent to 9ml of beer, or 3.75ml of wine. This can be harmful for those suffering from alcoholism. It should also be taken into

account in pregnant or breast feeding women, children and high risk groups such as patients with liver disease or epilepsy.  
**3. How to take this medicine**  
**Dose** is 5-10ml, to be taken three or four times daily using the measuring cup as below.  
**Adults and children ages 12 years and over:** 5 ml (fill measure cup to 5 ml), or 10 ml (fill measure cup to 10 ml). Rinse the measure cup after use.  
  
Not recommended for children under 12 years.  
**Do not take for more than 5 days.**  
**If you take too much of this solution**  
If you take more of the

