



People.Health.Care.

Getting the most out of Vliwasorb® Pro

Superabsorbent dressing for wounds with moderate to very high levels of exudate

HOW TO USE

1. Cleanse the wound and pat the edges dry.
2. Select the most appropriate shape and size dressing, and apply with the white side against the wound.
3. For cavity wounds, an appropriate dressing (e.g. gelling fibre or alginate) may be laid into the cavity before applying Vliwasorb® Pro.
4. Secure Vliwasorb® Pro against the wound, ensuring it keeps close contact to the wound contours. If compression is not required/inappropriate then an effective retention bandage should be used.

PRECAUTIONS



Vliwasorb® Pro will expand slightly as it absorbs exudate. **Do not** use for cavity wounds unless an appropriate cavity filler has been applied first.



Do not use Vliwasorb® Pro on lightly or non-exuding wounds. Step down to a less absorbent dressing when exudate levels reduce.



Do not cut or tear Vliwasorb® Pro.



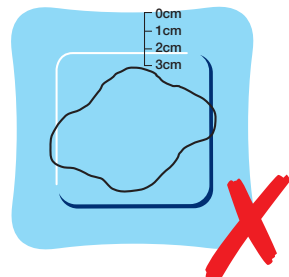
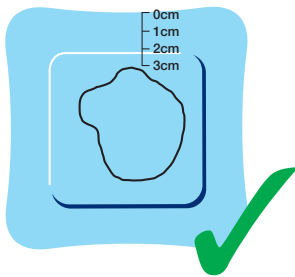
There is **no need to use** an additional wound contact layer beneath Vliwasorb® Pro.

TOP TIPS



Selecting the most appropriate dressing

Size: Ensure the wound is entirely covered by the superabsorbent pad (at least 3cm from the edge of the dressing)



Consider the anatomy: Assessment of the area where the dressing will be applied will help determine the most appropriate shape to use.

PLACEMENT TIPS FROM THE EXPERTS



"I apply a rectangular dressing up the limb rather than around it when treating leg ulcers on the gaiter region."

"If I need to use emollients, I only use the amount required and ensure its well absorbed before applying Vliwasorb Pro, to prevent this becoming a barrier that exudate cannot pass through."



"I sometimes find that placing the dressing in a diamond shape, rather than square on, better ensures the superabsorbent area is directly over the wound."

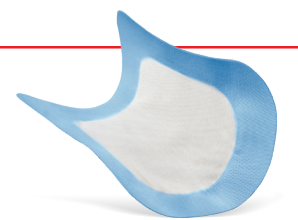
FREQUENCY OF DRESSING CHANGE



Vliwasorb® Pro may be left on the wound for several days, however this is dependent on the clinical condition of the wound and surrounding skin. The dressing should be changed when the absorbent capacity has been reached, or more frequently according to local pathways.

DID YOU KNOW?

Vliwasorb® Pro incorporates a smooth wound contact layer



FOR HIGHLY EXUDING VENOUS LEG ULCERS:



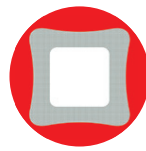
Use the **L&R 3 step Exudate Solution** to reduce exudate levels and see healing progression



Remove the reason

Reduce the need for the body to produce excess moisture e.g. with Debrisoft®

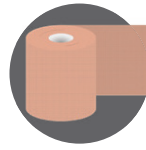
1



Absorb the excess

Retain exudate effectively, comfortably and economically with Vliwasorb® Pro

2



Compress to heal

Improve venous return and reduce oedema e.g. with Actico®

3

For further guidance please call our Customer Solutions Team on: **08450 606707** or visit: **www.Lohmann-Rauscher.co.uk**



5 037696 714022

Ordering information

Size (cm)	Wound pad (cm)	REF	PIP Code	Pack Contains
12.5 x 12.5	8.5 x 8.5	32 641	399-9893	10 Singles
12.5 x 22.5	8.5 x 18.5	32 642	399-9901	10 Singles
22 x 22	18 x 18	32 643	399-9919	10 Singles
22 x 32	18 x 28	32 644	399-9927	10 Singles